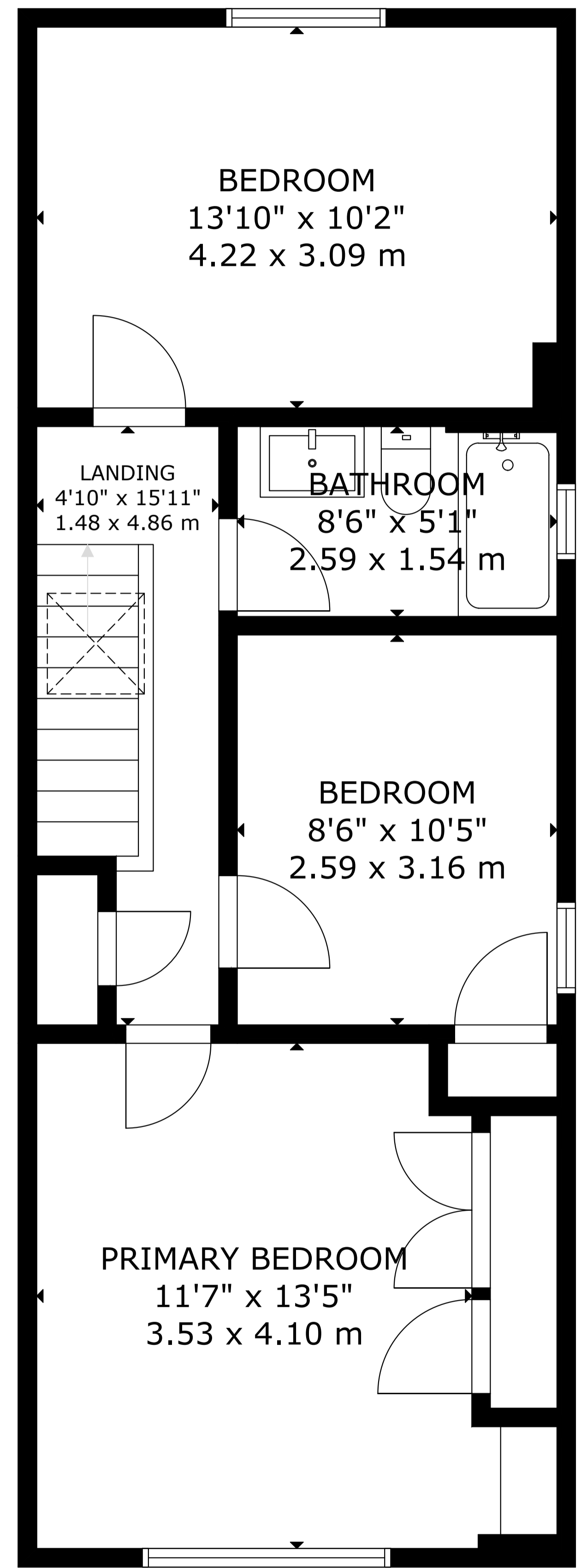
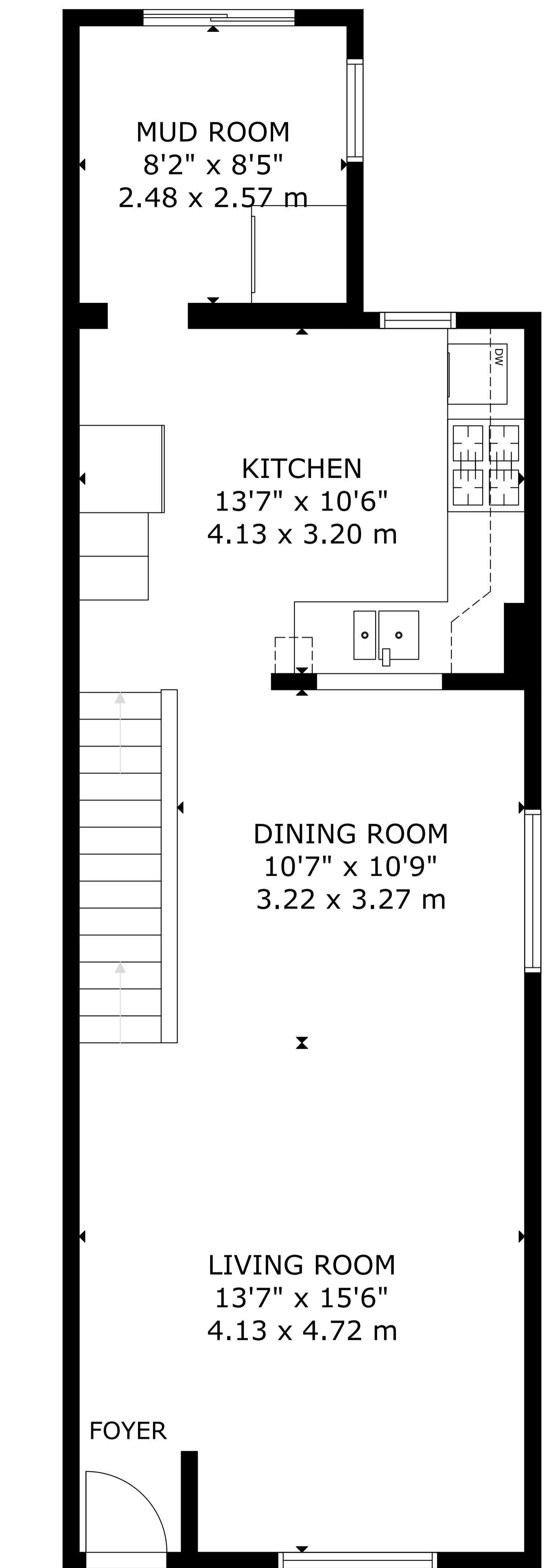
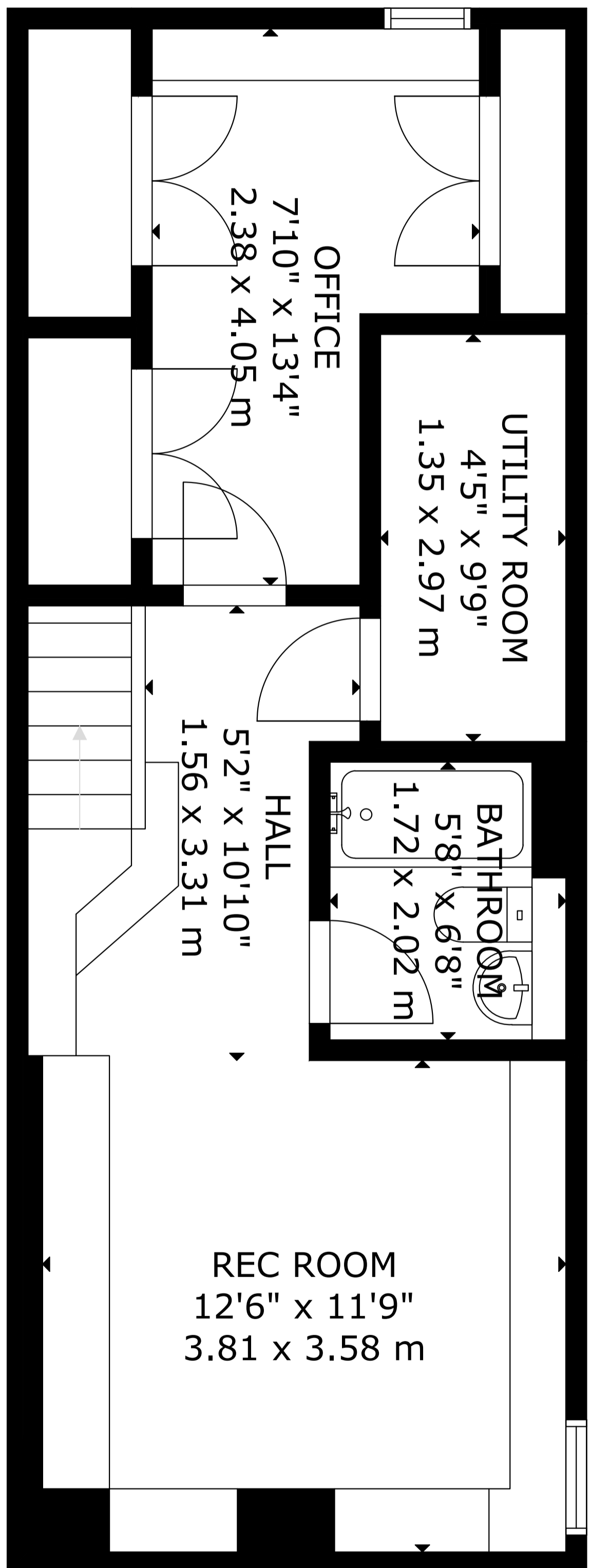


306 Gainsborough Road



GROSS INTERNAL AREA
 MAIN FLOOR: 54 m²/579 sq ft, SECOND FLOOR: 52 m²/561 sq ft
 LOWER LEVEL: 43 m²/468 sq ft
 TOTAL: 149 m²/1,608 sq ft
 SIZE AND DIMENSIONS ARE APPROXIMATE, ACTUAL MAY VARY